



Job Title: Electrical Engineer or Electric Engineering Supervisor

Reports to: Vice President, Electric and Fiber

This position will be responsible for a wide range of activities and key functions for the Tullahoma Utilities Authority. These responsibilities include but are not limited to:

ENGINEERING AND SYSTEM PLANNING RESPONSIBILITIES

- Provides engineering support for both internal and external customers
- Organizes engineering drawings and develops retention policy
- Evaluates system protection and coordination
- Perform system studies and develop long-range plans
- Design new construction and system improvement plans
- Calculates and models structure loading and design limitations
- Support Engineering Associates with staking and transformer sizing
- Specifies metering and commercial service requirements
- Coordinates with City Planning and Codes process
- Review development plans and coordinate service extensions
- Develop new subdivision service plans

PROGRAM RESPONSIBILITIES

- Supervises substation maintenance and testing program
- Tracks and documents SPCC, ELCP, and other policy manuals
- Coordinates lineman apprenticeship program
- Represents TUA in transformer partnership
- Tracks TVA billing and interval data
- Administers outage tracking program
- Manages traffic signal maintenance and construction
- Administers Joint Use billing and pole contacts
- Creates billing work orders for system damages or billable work
- Develop and periodically review service practices and policies

TECHNOLOGY

- Supports SCADA operation, configuration, and troubleshooting
- Ensures that digital maps are updated and published in a timely manner
- Supervises document storage system and retention policy
- Troubleshoots voltage drop, voltage flicker, and other service issues
- Programs protection relays and automation controls
- Configures and updates various databases and data repositories

Requirements:

- Bachelor's degree in Electrical or Computer engineering from an ABET accredited engineering school
- 3+ years of work experience in the utility industry or related field is preferred
- Professional Engineering license or the ability to obtain one in the state of Tennessee
- Advanced computer skills, including GIS and quick learner of TUA utilized software
- Strong written and verbal skills
- Working knowledge of National Electric Safety Code

The City:

Located equidistant and approximately one hour and fifteen minutes from Nashville, Chattanooga and Huntsville, large events such as Bonnaroo, the Jack Daniels Word Championship International BBQ Invitational, 41A Music Festival and The Tennessee Walking Horse Celebration all happen within 15 miles of Tullahoma.

Tullahoma is the home of the *Arnold Engineering and Development Complex (AEDC)*, the most advanced and largest complex of flight simulation and test facilities in the world. AEDC operates 58 aerodynamic and propulsion wind tunnels, rocket and turbine engine test cells, space environmental chambers, arc heaters, ballistic rooms, and other specialized units, of which 27 are unique to the United States, and 14 are unique in the world.

The *University of Tennessee Space Institute* is a one-of-a-kind educational and applied science facility, offering post baccalaureate engineering degrees. Tullahoma is a hub for aviation, aeronautics and avionics activities and

industries. Tullahoma Regional Airport is the state's sixth largest general aviation airport, and the nearby Beechcraft Heritage Museum houses a large collection of Beechcraft and related aircraft.

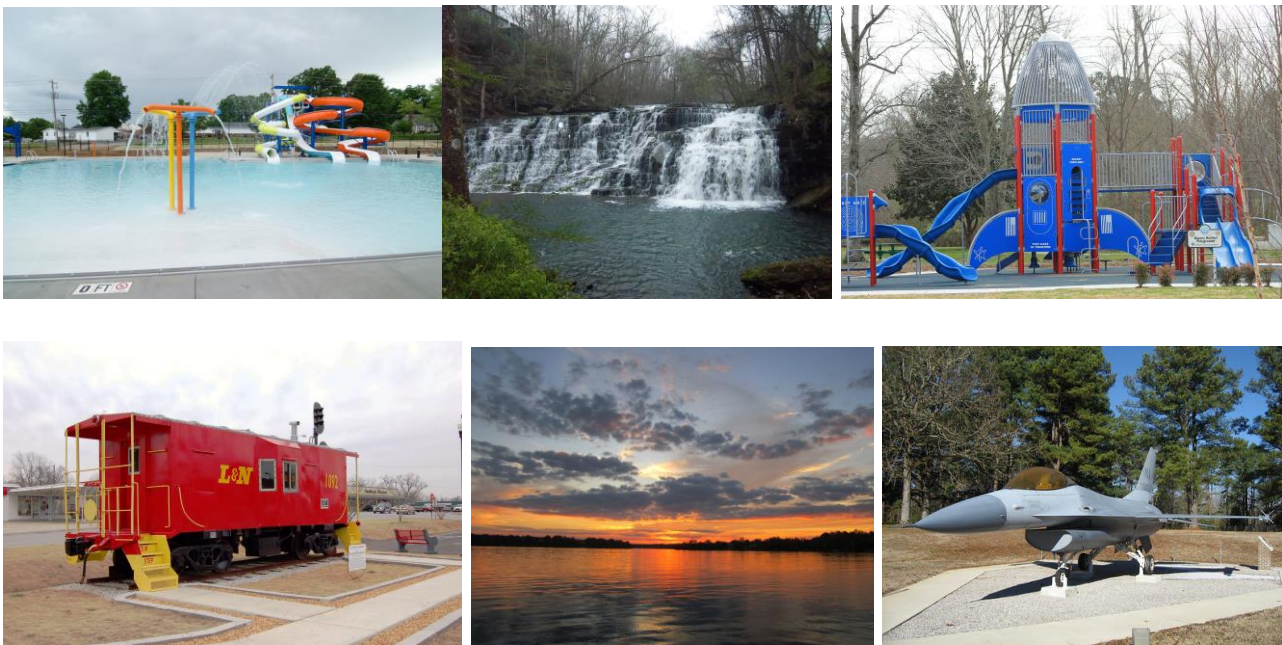
Motlow State Community College is the fastest growing community college in the state with more than 5,000 students. For more than 40 years, Motlow has offered certificates, associate degrees, and flexible learning pathways in southern Middle Tennessee and offers a dual enrollment with area high schools. Students may choose from two-year degree programs in over forty disciplines. The 2+2 program in Elementary Education (K-6) in partnership with Tennessee Technological University allows students to earn a Bachelor of Science degree in elementary education in Motlow classrooms. The Management and Human Relations (MHR) program through Trevecca Nazarene University enables working adults to earn a bachelor's degree in 13 months by attending class one night a week at the Moore County campus.

The highly-rated *Tullahoma City Schools* offer great educational opportunities. Student college entrance scores consistently exceed the state and national averages. Tullahoma has four elementary schools, two middle schools, and one high school for approximately 3,500 students. Tullahoma City Schools are among the best in the state.

There are more than 100 physicians practicing in the Tullahoma area. *Tennova Healthcare - Harton*, a 135-bed comprehensive acute care hospital, offers outstanding healthcare for Southern Middle Tennessee residents. Harton has approximately 550 employees and more than 80 full-time physicians on staff with more than 25 specialties.

The Tullahoma Metropolitan Statistical Area (MCSA) consisting of Coffee, Franklin, and Moore Counties is the second largest MCSA in Tennessee with a population of 101,334. Tullahoma is a regional shopping hub for four counties. Prominent retailers include Regal Cinema, Lowe's, Walmart, Kroger, Kmart, Tractor Supply, JC Penney, Peebles, Burke's, Hibbett's, Office Max, Dunham's Sports, Electronic Express, and Bath & Body Works. National restaurant chains include Red Lobster, Ruby Tuesday, Applebee's, Buffalo Wild Wings, Fazoli's, Zaxby's, Waffle House, and Chick-fil-A, along with many excellent local eateries.

Tullahoma boasts 3 lakes within a 15-minute drive from town. Lakewood Country Club is a full-service club with 18 holes, and the Arnold Golf Course is a nine-hole public course that also has practice greens and a driving range. Tullahoma Parks and Recreation operates an indoor pool and the recently opened Splash Island park. Tullahoma has an active arts community, including South Jackson Civic Center and Tullahoma Arts Center.



Other Details:

TUA is a progressive municipal utility, providing electricity, water, wastewater, cable television, gigabit internet, and telephone to a community of approximately 20,000 residents. TUA employs approximately 82 employees and operates with a \$50 million budget. This position is a direct report to the Vice President of Electric and Fiber. Salary will be very competitive. TUA offers excellent benefits including:

- Health insurance (100% paid for employee, 75% paid for family)
- Dental insurance (100% paid for employee)
- Life insurance (100% paid for employee at 4X salary)
- Long term disability insurance (100% paid for employee)
- Employee uniforms (100% paid for employee)
- Tuition reimbursement (up to 100% paid for employee)
- Defined contribution retirement (company contributes 12% of salary)

Candidate will be required to submit to a physical examination, pre-employment drug testing, and a background examination. TUA is a drug free workplace and an equal opportunity employer, and employee will be subject to random Drug and Alcohol Tests per company policy.